

# SPHERICAL PIGS TYPE 1

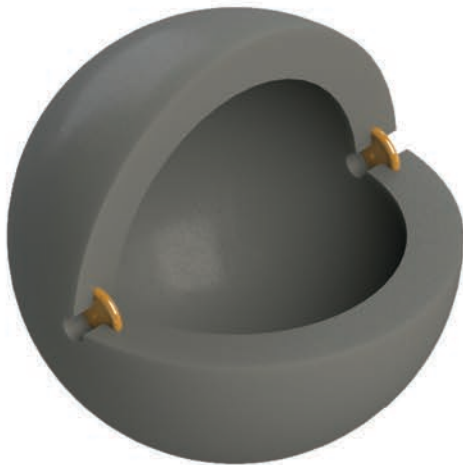
## INFLATABLE

### PRODUCT DESCRIPTION

The PEI spherical pigs are cast in a single piece. The 6" and larger spherical pigs are hollow which must be liquid filled and inflated through one of the two inflation valves. The OD selected should be less than pipe ID. This allows them to be inflated to pipe ID which improves performance and prolongs services life.



Model: SP1  
SPHERICAL PIG



PART NUMBER	SIZE	OD	WALL THK	WT. LBS. (EMPTY)	WT. LBS. (FULL)
SP1-5.9	6"	5.90	1.5	4.0	4.5
SP1-6.1	6"	6.10	1.5	4.4	5.0
SP1-6.2	6"	6.20	1.5	4.6	5.2
SP1-6.3	6"	6.30	1.5	4.8	5.5
SP1-7.7	8"	7.70	1.8	8.7	10.0
SP1-8.0	8"	8.00	1.8	9.6	11.2
SP1-8.2	8"	8.20	1.8	10.2	12.0
SP1-8.3	8"	8.30	1.8	10.5	12.5
SP1-9.5	10"	9.50	2.0	15.6	18.7
SP1-10.0	10"	10.00	2.0	17.6	21.7
SP1-10.3	10"	10.30	2.0	19.0	23.7
SP1-10.5	10"	10.50	2.0	19.9	25.0
SP1-11.7	12"	11.70	2.0	25.7	34.4
SP1-12.0	12"	12.00	2.0	27.4	37.0
SP1-12.3	12"	12.30	2.0	29.0	39.8
SP1-12.7	12"	12.70	2.0	31.3	43.7
SP1-13.0	14"	13.00	2.3	36.1	47.7
SP1-13.3	14"	13.30	2.3	38.1	50.5
SP1-14.3	16"	14.30	2.5	47.7	62.8
SP1-15.3	16"	15.30	2.5	56.0	76.6
SP1-17.3	18"	17.30	2.5	74.6	109.7
SP1-19.3	20"	19.30	3.0	108.8	153.2
SP1-21.0	22"	21.00	3.0	132.4	196.0
SP1-23.0	24"	23.00	3.0	163.2	255.8
SP1-23.7	24"	23.70	3.0	175.8	279.3
SP1-28.5	30"	28.50	3.0	264.6	479.2
SP1-29.7	30"	29.70	3.0	289.0	540.8
SP1-34.5	36"	34.50	3.0	403.1	839.3