

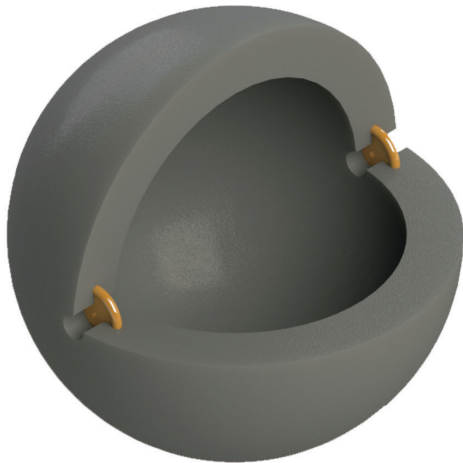
SPHERICAL PIGS

PRODUCT DESCRIPTION

The PEI spherical pigs are cast in a single piece. The 6" and larger spherical pigs are hollow which allows for liquid inflation through one of two inflation valves. This allows for them to be sized to the pipe ID to prolong the services life and increase performance. Spherical pigs are available in sizes 2" and larger.



Model: SPI-1
SPHERICAL PIG



PART NUMBER	SIZE	A*	B**	WT. LBS. (EMPTY)	WT. LBS. (FULL)
SPI-1-2.1	2"	2.10	SOLID	0.25	N/A
SPI-1-3.3	3"	3.30	SOLID	0.75	N/A
SPI-1-3.9	4"	3.90	SOLID	1.5	N/A
SPI-1-4.0	4"	4.00	SOLID	1.75	N/A
SPI-1-4.2	4"	4.20	SOLID	1.75	N/A
SPI-1-5.9	6"	5.90	1.5	2.75	4.50
SPI-1-6.1	6"	6.10	1.5	3.00	5.00
SPI-1-6.2	6"	6.20	1.5	3.13	5.38
SPI-1-6.3	6"	6.30	1.5	3.25	5.75
SPI-1-7.7	8"	7.70	1.8	5.75	9.75
SPI-1-8.0	8"	8.00	1.8	6.25	11.00
SPI-1-8.2	8"	8.20	1.8	6.50	11.50
SPI-1-8.3	8"	8.30	1.8	6.75	12.00
SPI-1-9.5	10"	9.50	2.0	10.00	18.00
SPI-1-10.0	10"	10.00	2.0	11.25	21.00
SPI-1-10.3	10"	10.30	2.0	12.00	23.00
SPI-1-10.5	10"	10.50	2.0	12.50	24.25
SPI-1-11.7	12"	11.70	2.0	16.00	33.25
SPI-1-12.0	12"	12.00	2.0	17.00	36.00
SPI-1-12.3	12"	12.30	2.0	18.00	38.75
SPI-1-12.7	12"	12.70	2.0	19.00	42.25
SPI-1-13.0	14"	13.00	2.3	22.25	45.75
SPI-1-13.3	14"	13.30	2.3	23.25	48.75
SPI-1-14.3	16"	14.30	2.5	29.75	60.75
SPI-1-15.3	16"	15.30	2.5	34.50	74.25
SPI-1-17.3	18"	17.30	2.5	45.00	106.50
SPI-1-19.3	20"	19.30	3.0	66.25	148.25
SPI-1-21.0	22"	21.00	3.0	79.50	190.00
SPI-1-23.0	24"	23.00	3.0	96.50	248.00
SPI-1-23.7	24"	23.70	3.0	106.50	269.00
SPI-1-28.5	30'	28.50	3.0	152.25	484.00
SPI-1-29.7	30'	29.70	3.0	162.25	505.00
SPI-1-34.5	36"	34.50	3.0	230.50	821.75

* A IS EQUAL TO THE OUTSIDE DIAMETER

** B IS EQUAL TO THE SPHERE WALL THICKNESS

DIMENSIONS ARE APPROXIMATE