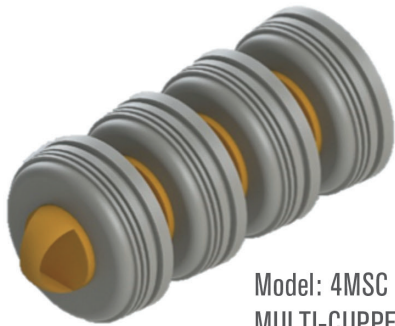


MULTI-SEAL PIGS

PRODUCT DESCRIPTION

The PEI Multi-Seal pigs come in two configurations. The four Multi-Seal cup configuration (Model 4MSC) is for light cleaning, batching or displacement applications. The two Multi-Seal cup and two Scraper cup configuration (Model 2MS2SC) is for those heavier Paraffin/ Asphaltines cleaning applications. Either configuration with traverse 1.5D bends. Multi-Seal cups have multiple sealing surfaces which enhance the sealing ability of the cup and also prolongs the wear life of the cup. The Scraper cup is uniquely designed to scrape deposits from the pipeline wall to reduce internal corrosion and increase flow. Both configurations are available in 8" and larger sizes and are re-buildable.



Model: 4MSC
MULTI-CUPPED PIG

Part Number	SIZE	A	B	WT. LBS.
4MSC-8	8"	21"	16"	20
4MSC-10	10"	24"	19"	31
4MSC-12	12"	30"	24"	50
4MSC-14	14"	30"	24"	56
4MSC-16	16"	34"	28.5"	92
4MSC-20	20"	34"	29.5"	157
4MSC-24	24"	41"	37"	223
4MSC-26	26"	41"	37"	242
4MSC-30	30"	52"	46"	400
4MSC-36	36"	52"	46"	536



Model: 2MS2SC
CLEANING CUPPED PIG

Part Number	SIZE	A	B	WT. LBS.
2MS2SC-8	8"	21"	16"	20
2MS2SC-10	10"	24"	19"	31
2MS2SC-12	12"	30"	24"	50
2MS2SC-14	14"	30"	24"	56
2MS2SC-16	16"	34"	28.5"	92
2MS2SC-20	20"	34"	29.5"	157
2MS2SC-24	24"	41"	37"	223
2MS2SC-26	26"	41"	37"	242
2MS2SC-30	30"	52"	46"	400

* A IS EQUAL TO THE TOTAL LENGTH

** B IS EQUAL TO THE SEAL LENGTH

DIMENSIONS ARE APPROXIMATE